

# T SERIE

english

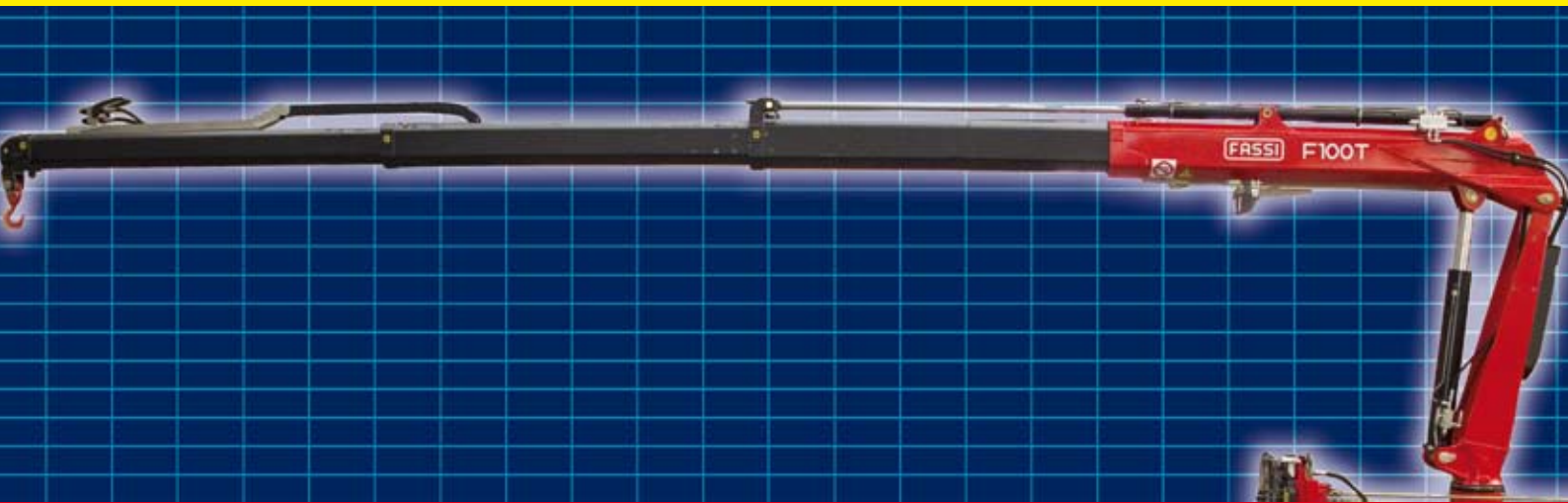
italiano

français

deutsch

español

nederlands

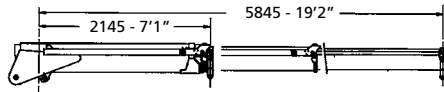


cranes without compromise

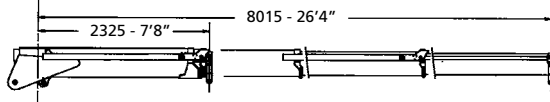
**FASSI**

CRANES WITHOUT COMPROMISE

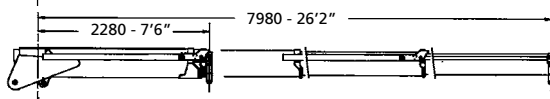
**F100AT.12**  
**F120ATXP.12**



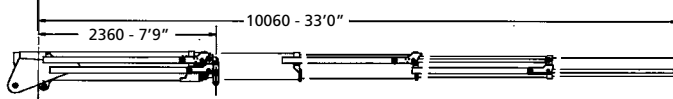
**F100AT.13**  
**F120ATXP.13**



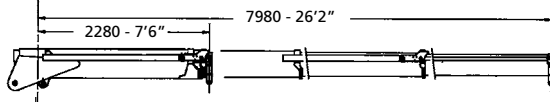
**F130AT.13**  
**F150ATXP.13**



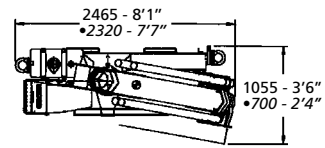
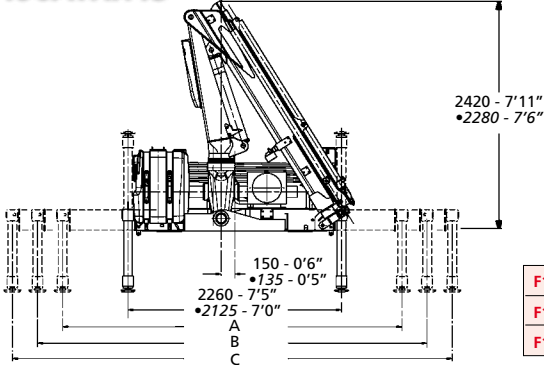
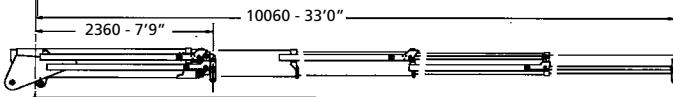
**F130AT.14**  
**F150ATXP.14**



**F170AT.13**  
**F190ATXP.13**



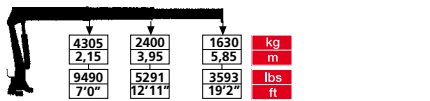
**F170AT.14**  
**F190ATXP.13**



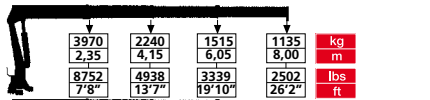
• F100AT/F120ATXP

	A - STANDARD		B - EXTRA		C-SUPEREXTRA	
F100AT/F120ATXP	3925	12'11"	4635	15'2"	5465	17'11"
F130AT/F150ATXP	4590	15'1"	5820	19'1"	6620	21'8"
F170AT/F190ATXP	4590	15'1"	5820	19'1"	6620	21'8"

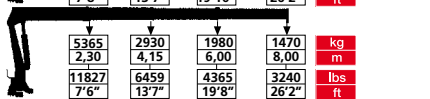
**F100AT.12**



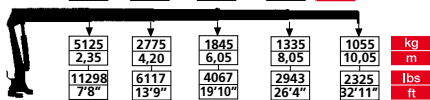
**F100AT.13**



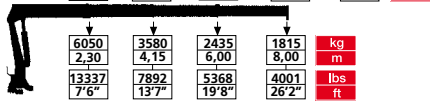
**F130AT.13**



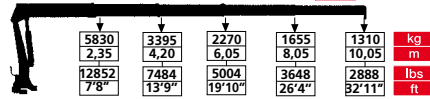
**F130AT.14**



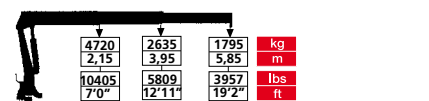
**F170AT.13**



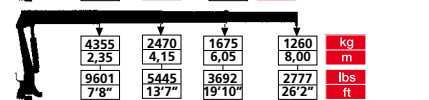
**F170AT.14**



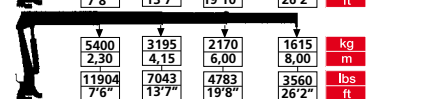
**F120ATXP.12**



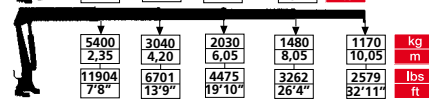
**F120ATXP.13**



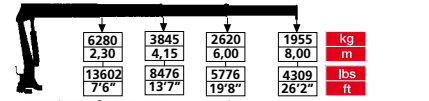
**F150ATXP.13**



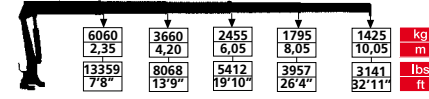
**F150ATXP.14**



**F190ATXP.13**



**F190ATXP.14**



	tm		m		°	kNm		MPa		l/min		oil					
	lbs.ft	ft	ft	ft		lbs.ft	psi	gal/min	gal	kg	lbs						
F100AT.12	9,5	69075	5,85	19'2"	3,70	12'1"	390	17,6	12985	26,5	3850	40	11,0	90	23,8	1080	2380
F100AT.13	9,3	67628	8,00	26'2"	5,70	18'8"	390	17,6	12985	26,5	3850	40	11,0	90	23,8	1160	2557
F120ATXP.12	10,5	75946	8,00	26'2"	3,70	12'1"	390	17,6	12985	28,5	4140	40	11,0	90	23,8	1080	2380
F120ATXP.13	12,2	88243	10,05	32'11"	5,70	18'8"	390	17,6	12985	28,5	4140	40	11,0	90	23,8	1160	2557
F130AT.13	12,3	88966	8,00	26'2"	5,70	18'8"	390	17,6	12985	26,5	3850	40	11,0	90	23,8	1585	3494
F130AT.14	12,0	86796	10,05	32'11"	7,70	25'3"	390	17,6	12985	26,5	3850	40	11,0	90	23,8	1720	3792
F150ATXP.13	13,3	96199	8,00	26'2"	5,70	18'8"	390	17,6	12985	28,5	4140	40	11,0	90	23,8	1585	3494
F150ATXP.14	12,8	92582	10,05	32'11"	7,70	25'3"	390	17,6	12985	28,5	4140	40	11,0	90	23,8	1720	3792
F170AT.13	14,9	107772	8,00	26'2"	5,70	18'8"	390	21,5	15862	31,5	4570	40	11,0	90	23,8	1630	3593
F170AT.14	14,3	103432	10,05	32'11"	7,70	25'3"	390	21,5	15862	31,5	4570	40	11,0	90	23,8	1795	3957
F190ATXP.13	16,0	115728	8,00	26'2"	5,70	18'8"	390	21,5	15862	32,5	4720	40	11,0	90	23,8	1630	3593
F190ATXP.14	15,4	111388	10,05	32'11"	7,70	25'3"	390	21,5	15862	32,5	4720	40	11,0	90	23,8	1795	3957

Data e dimensioni sono forniti a titolo indicativo e non impegnativo - Toutes les données et descriptions sont fournies à titre indicatif, sans engagement - Unverbindliche Angaben, Konstruktionsänderungen vorbehalten  
Data and descriptions are approximate and not binding - Datos y descripciones todos a título indicativo y no imperativo - Specificaties zijn niet bindend, wijzigingen derhalve voorbehouden



FASSI GRU S.p.A. - Via Roma, 110 - 24021 Albino (Bergamo) ITALY  
Tel: +39 035 776400 - Fax +39 035 755020  
http://www.fassi.com E-mail: fassi@fassi.com

