

VT-160-F

BOX MAN TGM 4x4



VT-160-F

SPECIFICATION

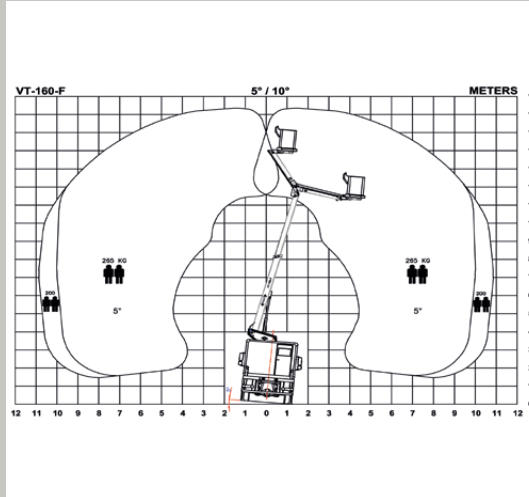
VT-160-F (5°/10°)

Working height	16.30 m
Platform height	14.30 m
Max. working outreach	10.90 / 10.00 m*
Max. bucket capacity	200 / 265 kg
Flyboom	200°
Minimum GVW of the vehicle	13000 kg

*Depending on vehicle. In D, CH and A, the outreach will be reduced with approximate 0,5 m on 0° slope

STANDARD

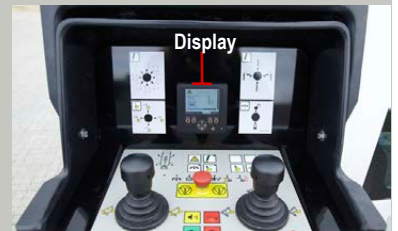
- PTO driven hydr. Pump
- 2 set H-Frame Outriggers
- ES: Emergency pump system
- 200° Flyboom
- 2 Man bottom mounted bucket
- VP: 230 V connection to platform
- FPC: Full prop. CANbus control
- Display in bucket ¹⁾
- MOS: Max. outreach system (length/angle)
- RLC: Remote Handheld Lower Control
- 1 KV insulation



OPTIONS

- AEP: Access Environmental Powerpack
- AB: Airline to bucket
- Bucket rotator 2 x 85°
- 12 V DC Air Compressor
- 24 V/230 V Inverter
- LRA: Limited Rotation Working Area
- OLS: Outreach Load Sensing System
- TSS: Tilt Sensing System

NOTE



VT-160-F/C520/2013-05/EN



INTERNATIONAL A/S
 Søndervang 3 - DK-9640 Farsø
 Phone +45 9863 2433 - Fax +45 9863 2483
 sales@TIMEintl.dk - www.TIMEintl.dk

